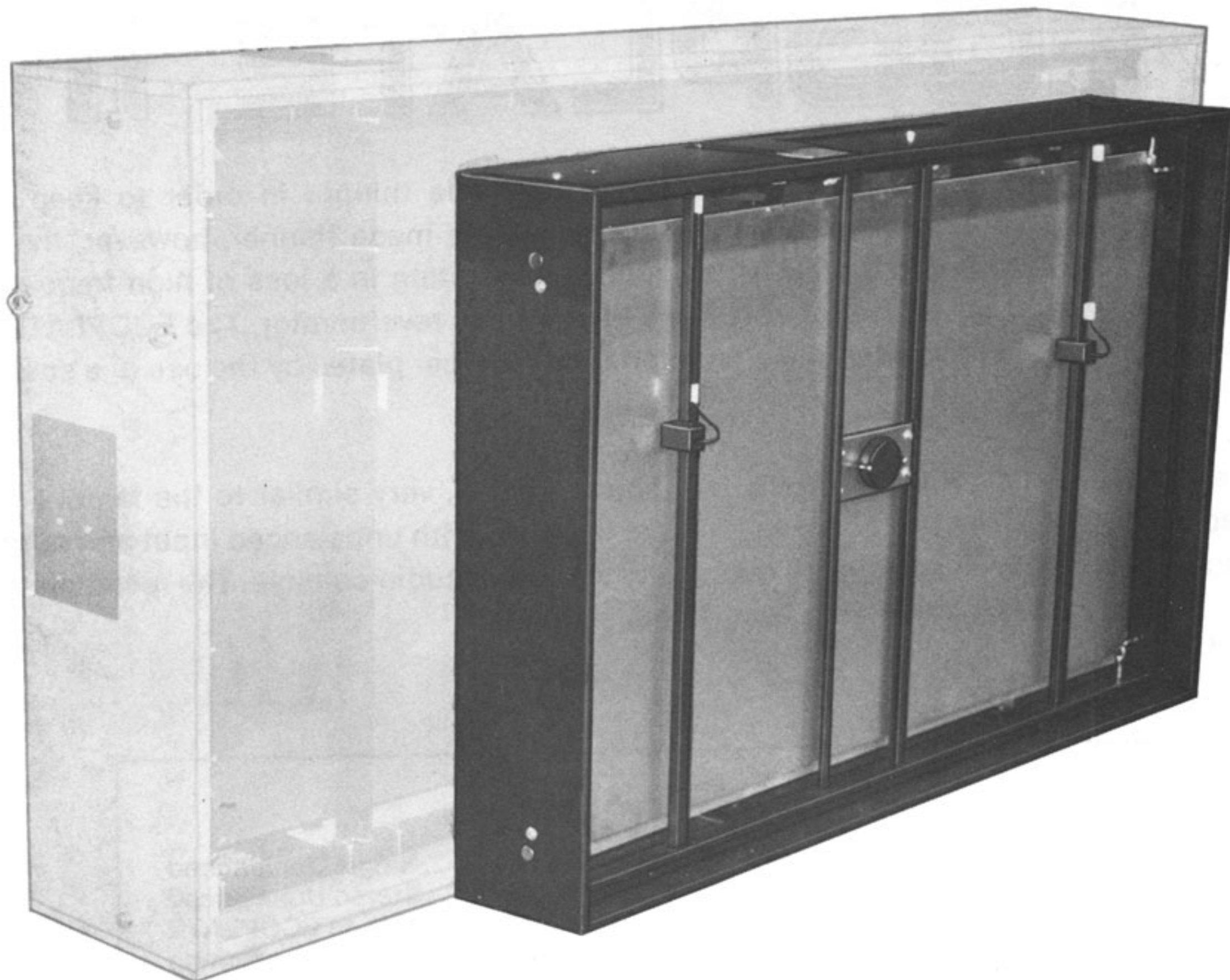


The nation's leading manufacturer of Reverb Plates

# STUDIO TECHNOLOGIES

*announces:*



*the new*

## "space saver"

# ECOPLATE™ II

By using unbalanced, transformerless input and output circuits, in addition to several innovative design breakthroughs, we have brought the plate reverb within the price reach of nearly every studio in the world.

STUDIO  
TECHNOLOGIES



\*an affiliate of **Programming Technologies, Inc.**

# ECOPLATE™ II

As plates are made smaller they must also be made thinner in order to keep the eigentone density (coloration) constant. If the plate is made thinner, however, the air pressure begins to damp the higher frequencies resulting in a loss of high frequency decay time which cannot be tolerated in a high quality reverberator. The ECOPLATE II, has been developed to match the characteristics of larger plates by the use of a special metal and damping plate.

As a result, the ECOPLATE II reflects a sound quality, very similar to the famous full sized ECOPLATE. The low noise amplifier is supplied with unbalanced input and output connections and level sets which match any standard studio console. The reverberation time is continuously adjustable from 1 to 6 seconds.

## SPECIFICATIONS:

Input .....	Single Unbalanced
Output .....	Stereo Unbalanced
Frequency Response .....	Same as ECOPLATE
Reverb Time .....	Adjustable 1 to 6 seconds
Signal to Noise .....	55 db
Input Impedance .....	10 K ohm Unbalanced
Output Impedance .....	50 ohms Unbalanced Both Outputs
Max Output Level .....	+ 24 db (re. .775v)
Power Supply .....	120-240 vac 50 to 60 Hz
Weight .....	130 lbs.
Dimensions .....	.68"x43"x10"

**Remote Control Available**

**STUDIO  
TECHNOLOGIES** 

6666 North Lincoln Avenue • Lincolnwood, IL 60645

**312/676-9400**



## INSTRUCTION MANUAL FOR THE ECOPLATE II

### I. UNPACKING AND SET-UP

- A. Inspect for shipping damage and if any is noticed, call your dealer.
- B. Remove sides of ECOPLATE II using phillips screwdriver. A variable speed reversing drill with screwdriver bit is useful for this purpose. The box containing the amplifier will have the driver magnet, pointer arm assembly, tuning guage and 4 mounting screws.

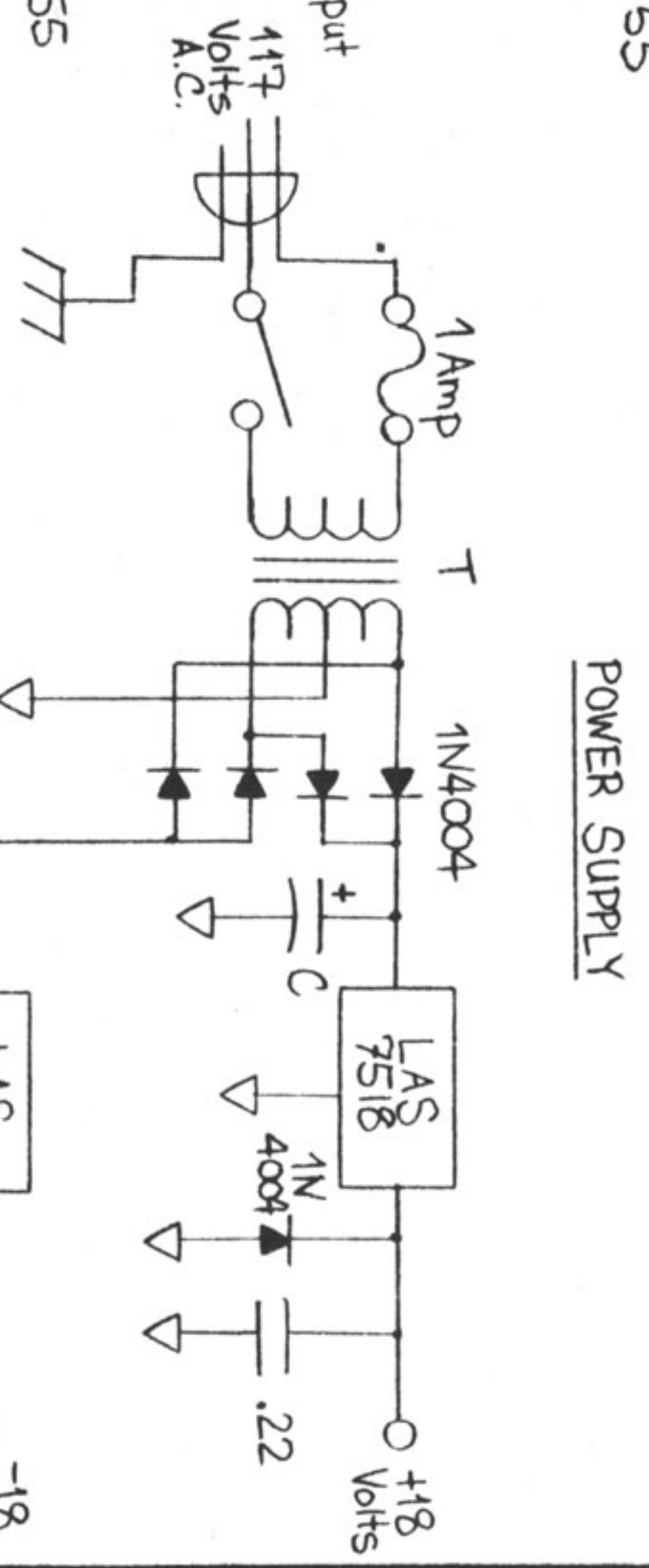
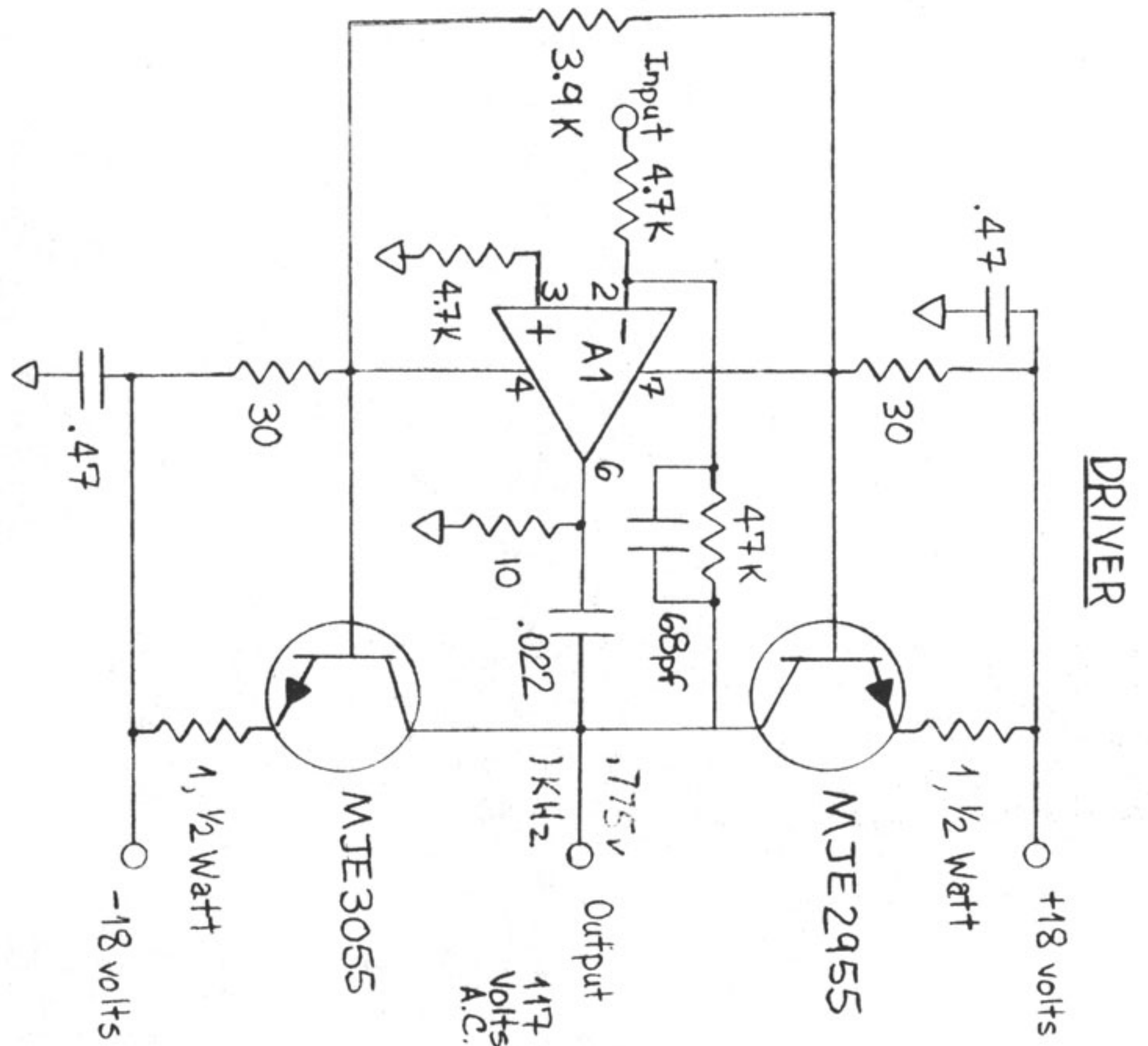
Remove the shipping ties holding the damping plate against the reverb plate and by grasping one of the arms, move the damping plate in and out to be sure it is free. Remove the 2 foam rubber shipping strips behind the driver mounting plate in the center of the unit. Now remove each foam rubber shipping strip beside each pick-up.

- C. Mount the amplifier in the hole on the top of the ECOPLATE box (with the power cord nearest from the reverbtime scale) using the 4 screws supplied. Plug in the 2 pick-up leads matching the numbers on amplifier rear with those on the plugs. Attach the driver spade lugs to the barrier strip on the amplifier rear. Be sure to attach the spade lug with GND marking to the terminal with the GND marking.
- D. Move the damping plate so it is as close as it will go to the reverb plate and install the pointer arm assembly by threading the coupler onto the bolt inside the hole next to the reverbtime scale. Several turns should bring the pointer snugly up tight while it points to one second reverbtime. Move the pointer to six seconds; it should stop there.
- E. Remove the 4 hole plugs marked with red dots and using a socket wrench, tighten the 4 bolts (2 top and 2 sides) 1/4 turn while holding the spade coupler it is threaded into with pliers. This should tension the unit properly, but owing to unpredictable conditions during shipping, it is extremely important to use the tension gauge and instructions supplied to get the best sound from your ECOPLATE II. Just a small difference in tension between edges of the plate (1/8 turn on the bolt) can cause audible flutter in the reverberation.

- F. Locate the driver magnet and remove the protective tape from the gap side. Keep away from iron particles as they may be attracted into the gap. Check to see that the voice coil is centered in the hole of the driver mounting plate and carefully slip the magnet over it so the screws on the magnet line up with the holes in the driver plate. Tighten screws. Gently push in on reverb plate and listen for sounds indicating the voice coil may be rubbing on the magnet. If any is heard, loosen the 4 screws on the driver mounting plate and move it til the voice coil is centered.
- G. Plug in the amplifier to the proper power source and connect input and output lines to your console. The input is 10K ohm unbalanced, either +4 or -10dbm level can be accommodated by a switch on the front panel. It is important that this switch be set at the proper position for your console otherwise overload or noise will occur. If you are in doubt consult your dealer. Other levels can be set by the trimpot just below this switch. The outputs are low impedance unbalanced and are factory set for +4dbm. Again, other levels can be set by the two trimpots just above the L.E.D. indicator.
- H. Reinstall the sides and your ECOPLATE is ready to operate.
- I. Although the ECOPLATE is fairly insensitive to outside noise, it should be operated in a quiet place such as a closet. It should never be operated in the control room with monitor loud speakers or inferior sound or even feedback can occur. If there is high impact noise in the building, it can be hung by chains from the ceiling joists.



A1: UA759CH



C: 1,000/50 Volts  
T: P8671

# Ecoplata™ II

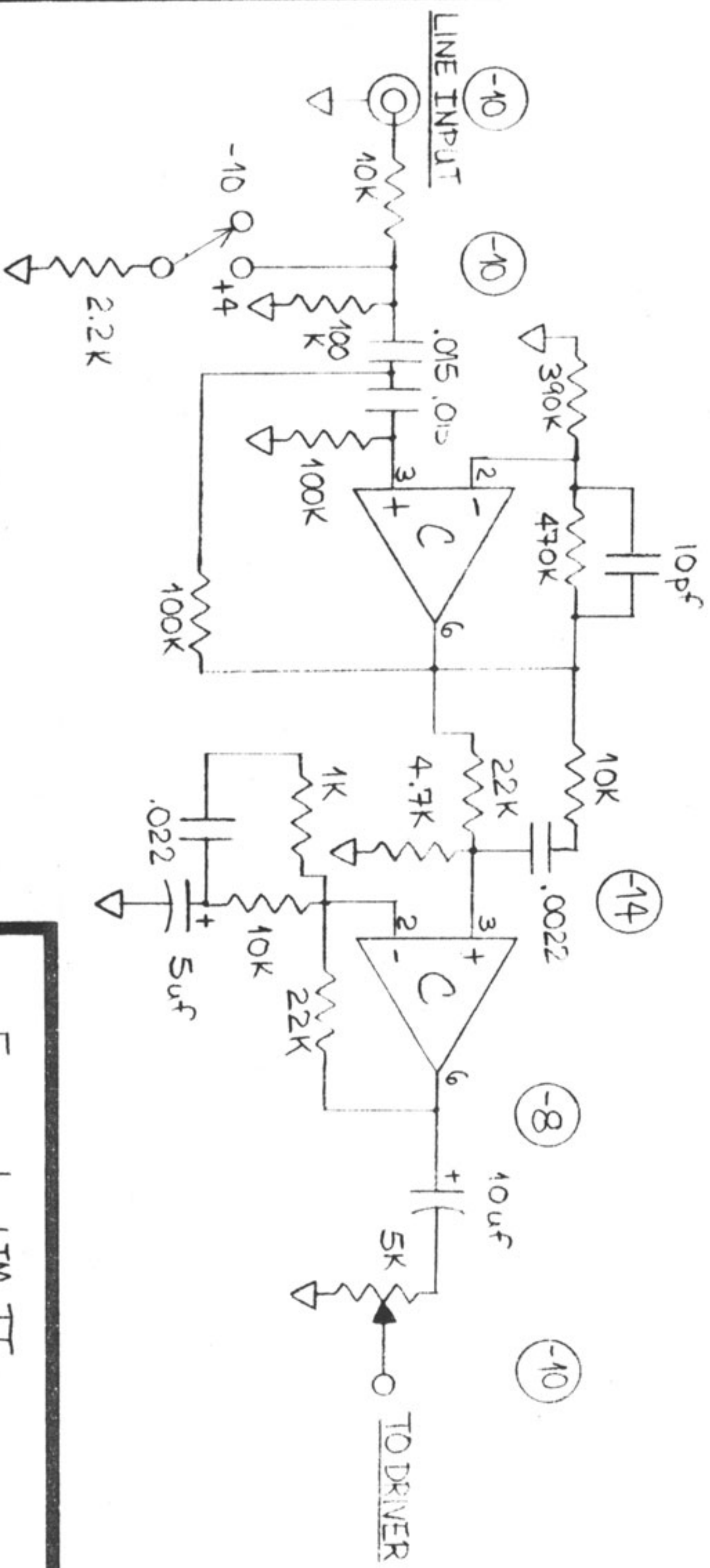
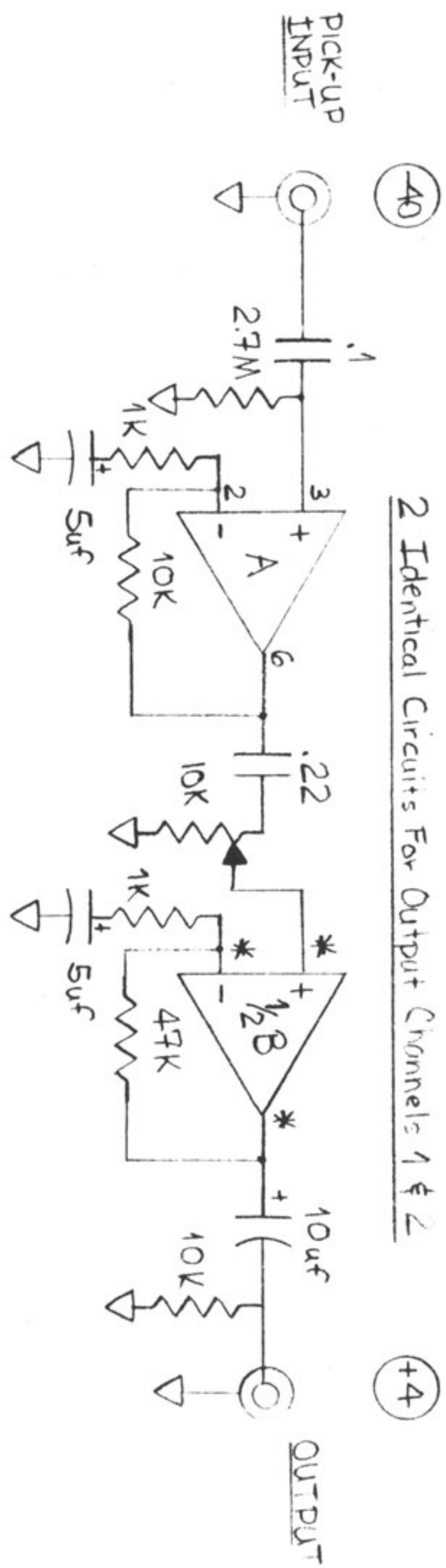
SCALE: \_\_\_\_\_  
DATE: Sept 12, 1980  
APPROVED BY: \_\_\_\_\_  
DRAWN BY: GKK  
REVIEWED: \_\_\_\_\_

## Studio Technologies

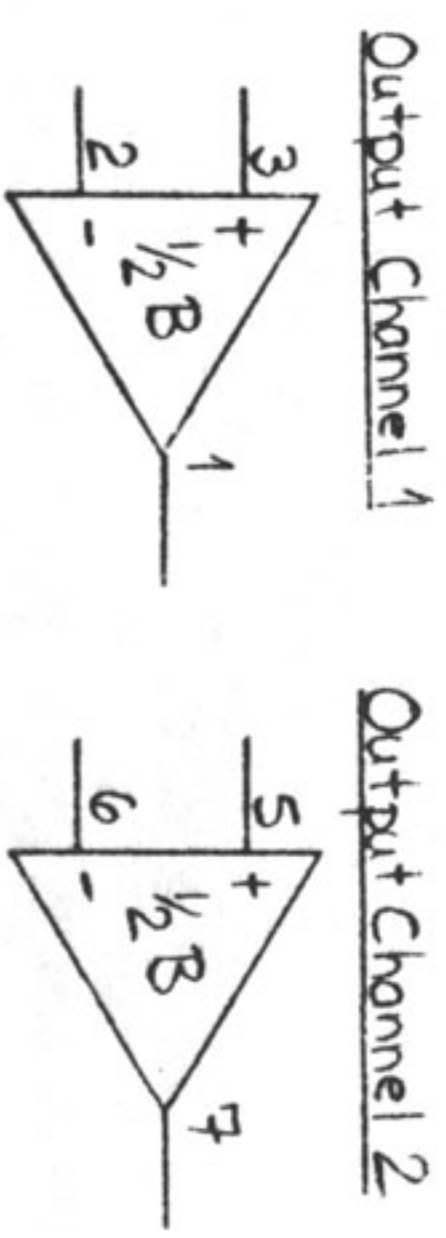
LINCOLNWOOD, ILLINOIS 60045

DRAWING NUMBER  
EP2-Ø2

2 Identical Circuits For Output Channels 1 & 2



\* PIN-OUTS

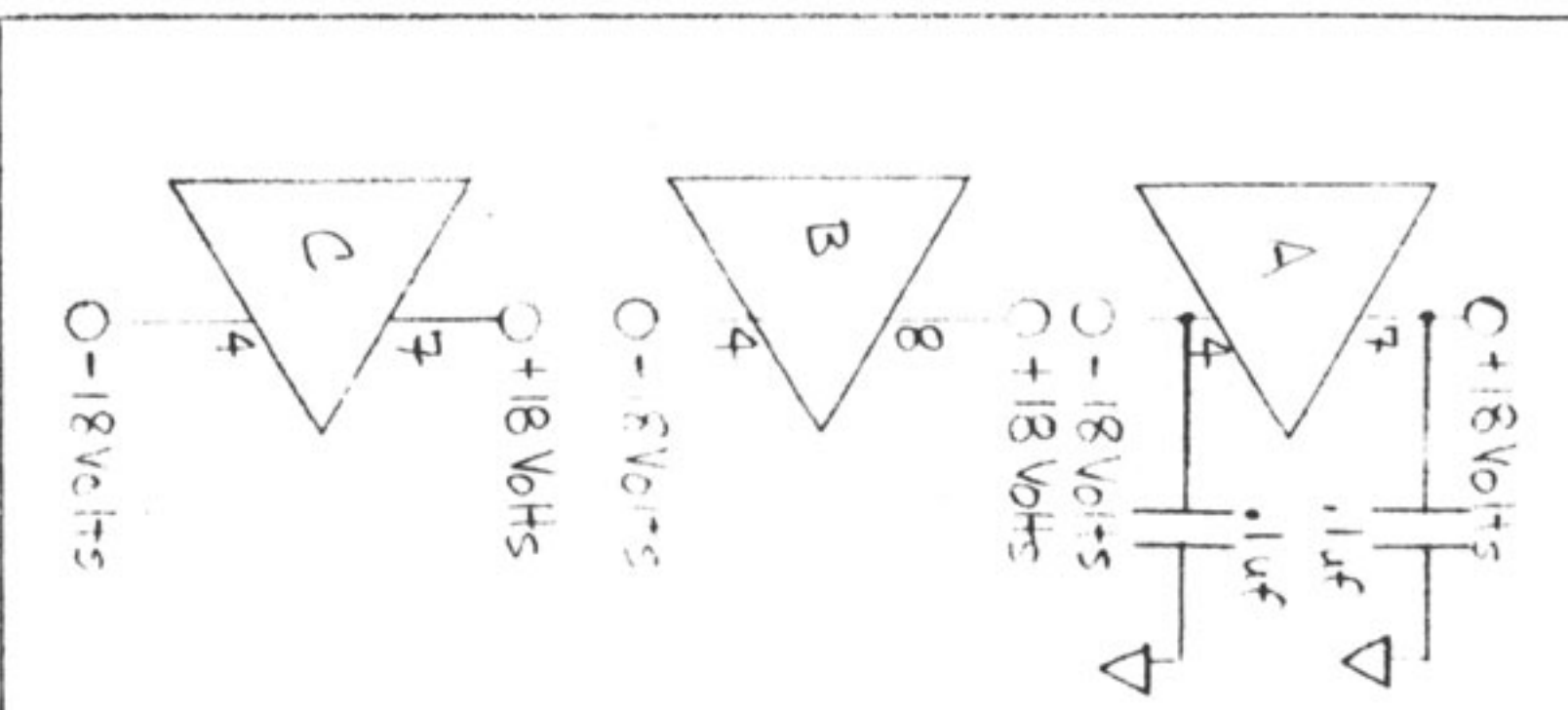


Ecoplate™ II

SCALE: _____	APPROVED BY: _____
DATE: Sept 12, 1980	DRAWN BY: GKK
	REVISED: _____

Studio Technologies

LINCOLNWOOD, ILLINOIS 60045



- A: LF356
- B: NE5532
- C: LF351

DRAWING NUMBER  
EP2-01