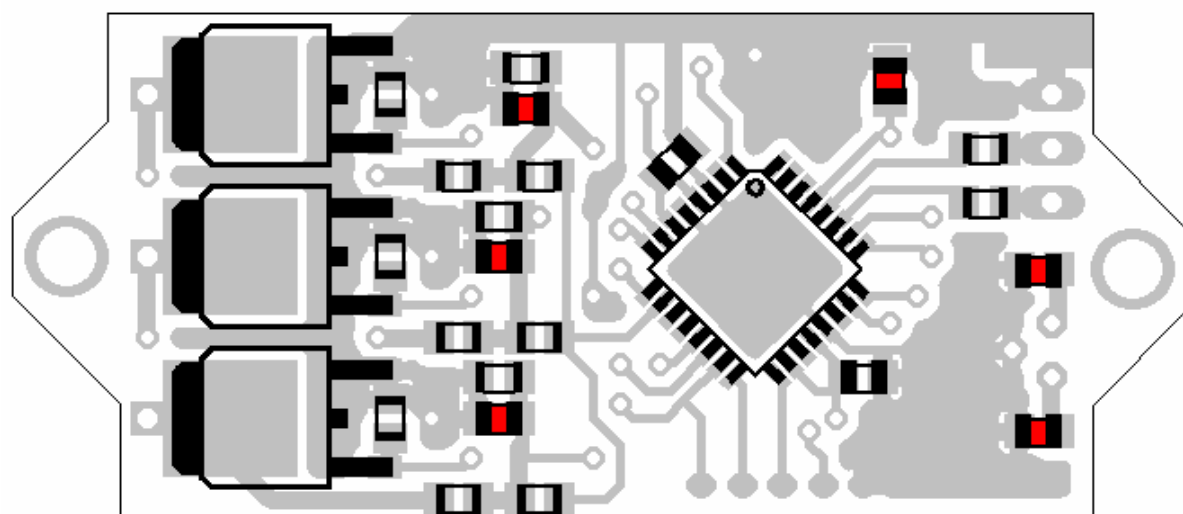
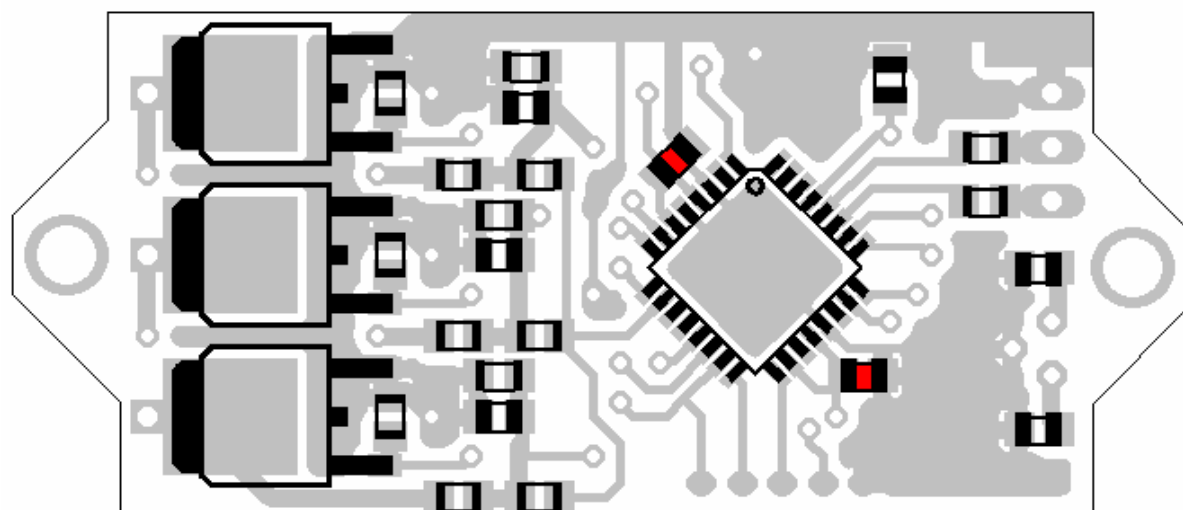


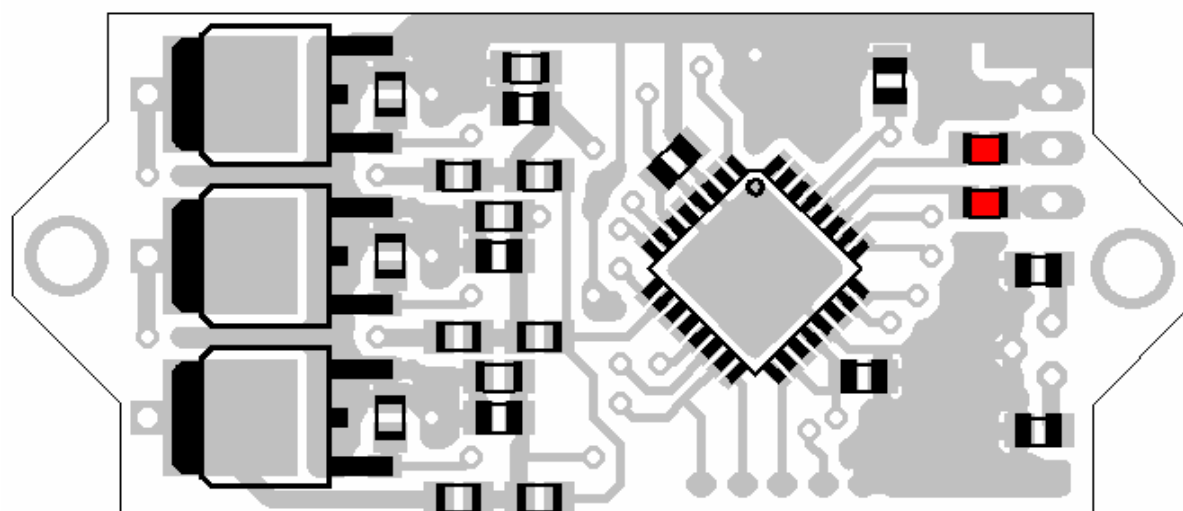
100nF



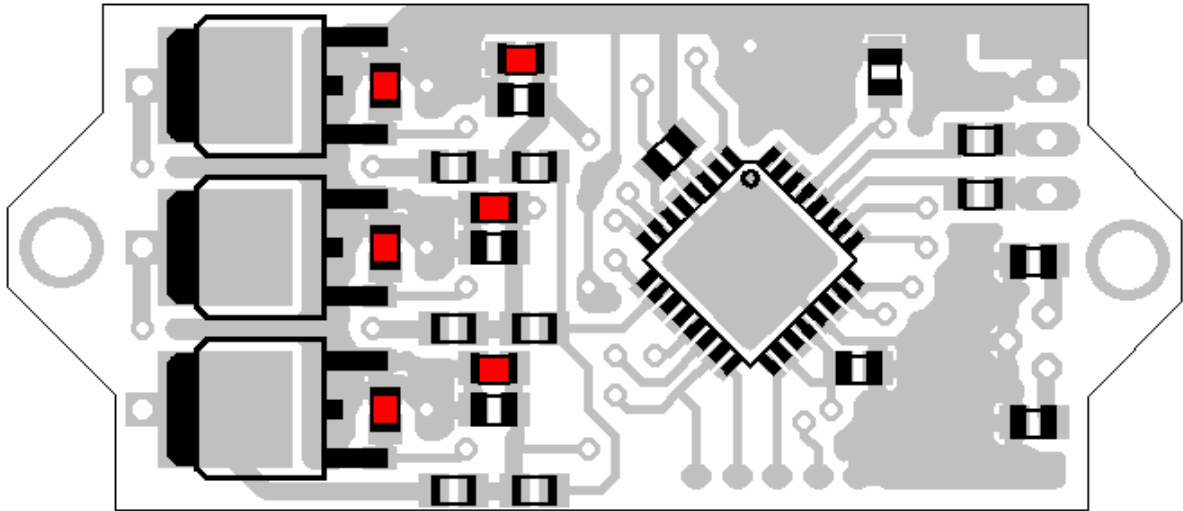
2,2 $\mu$ F



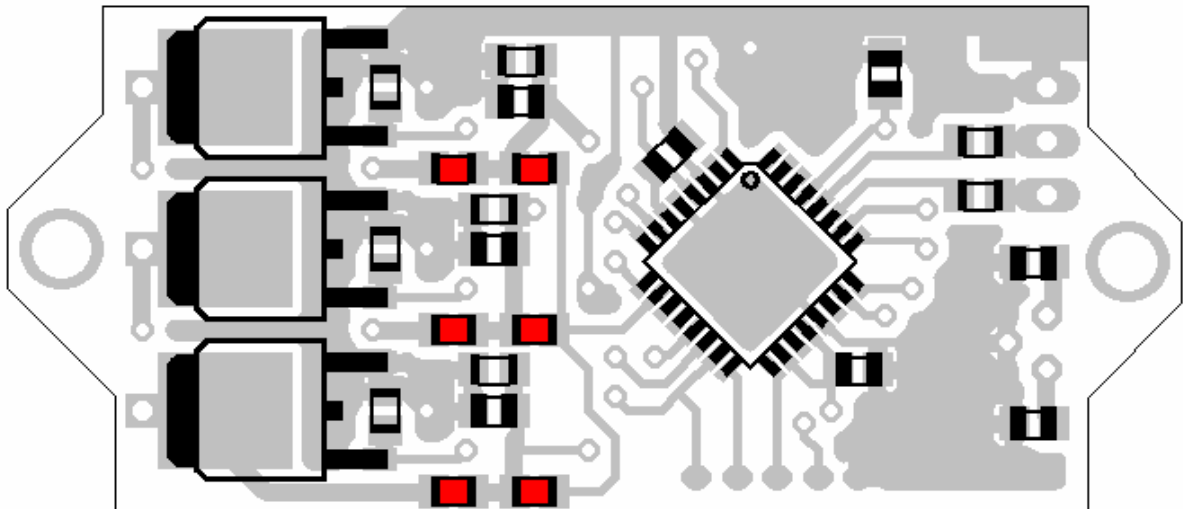
100Ohm



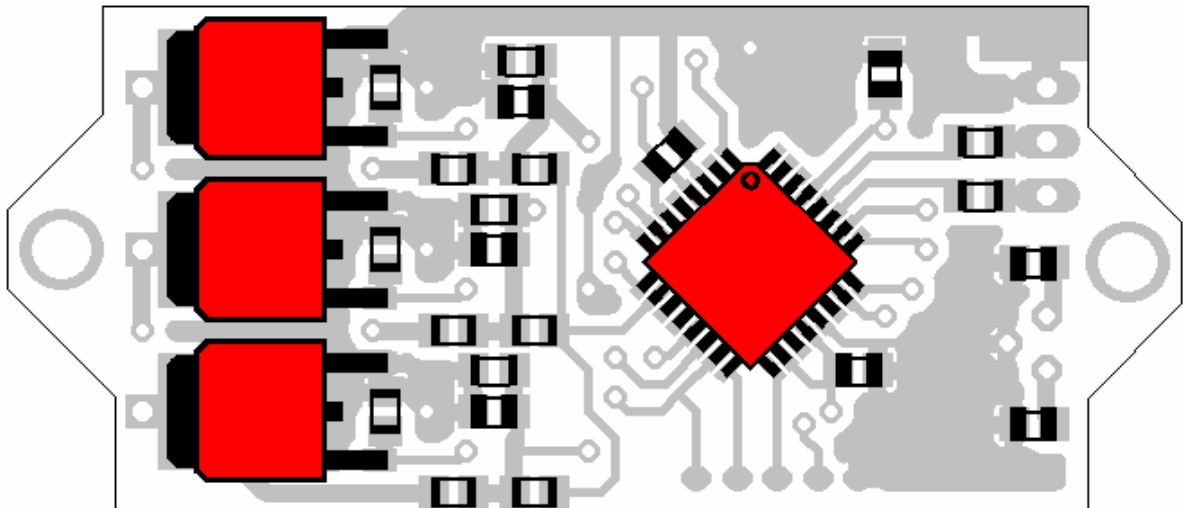
10kOhm



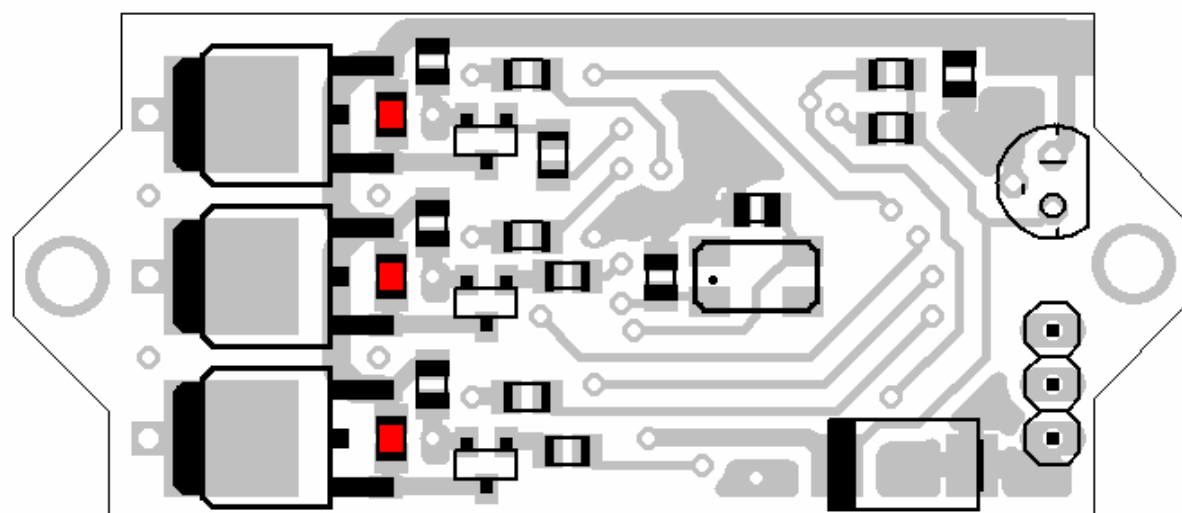
4,7kOhm



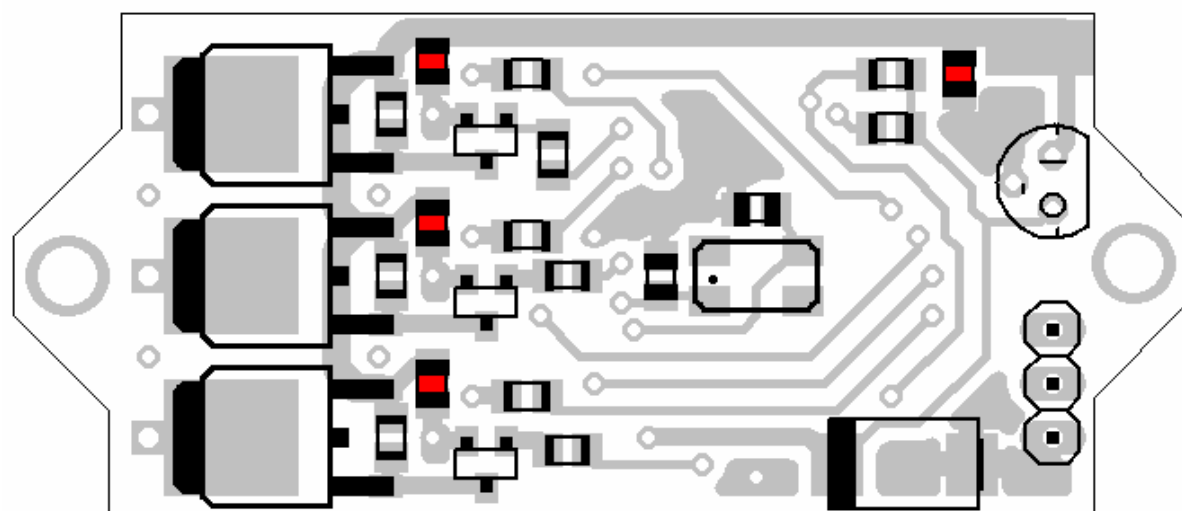
ATmega88 und IRFR1205 oder besser IRLR7843



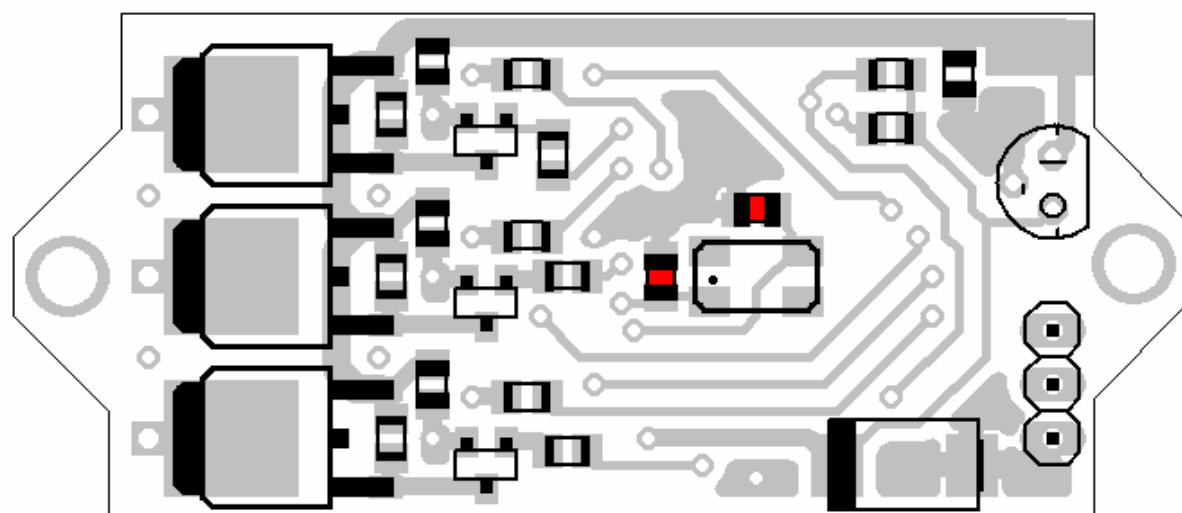
270Ohm



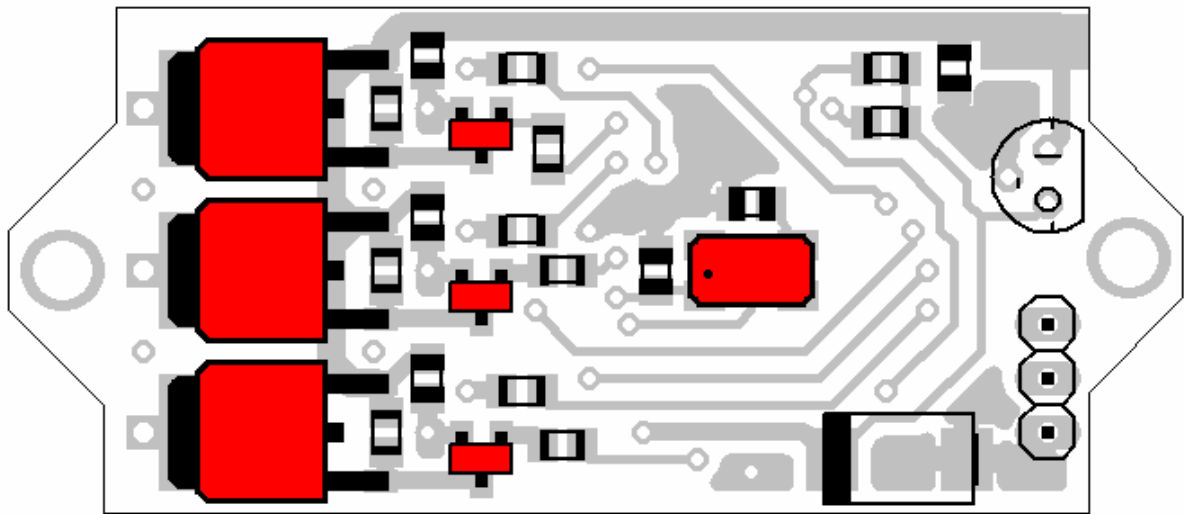
100nF



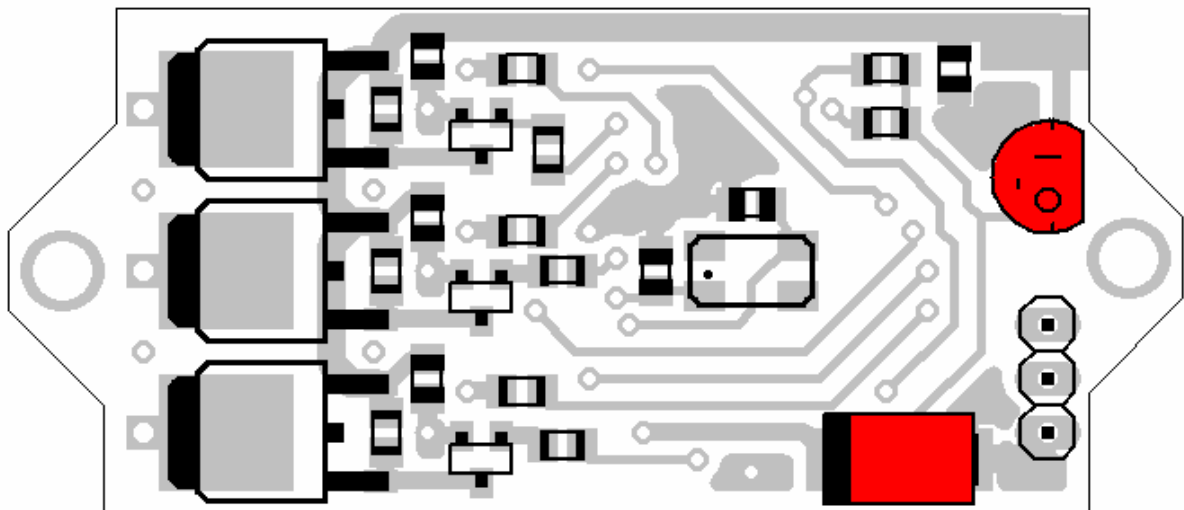
22p



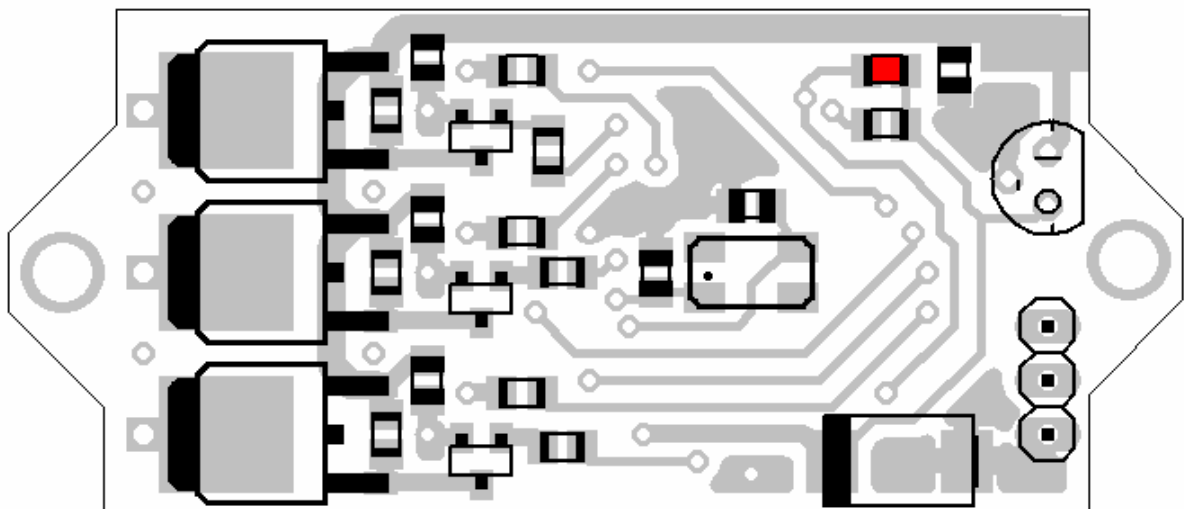
Quarz 12MHz, IRFR 5305 oder besser FDD6637 und BC847



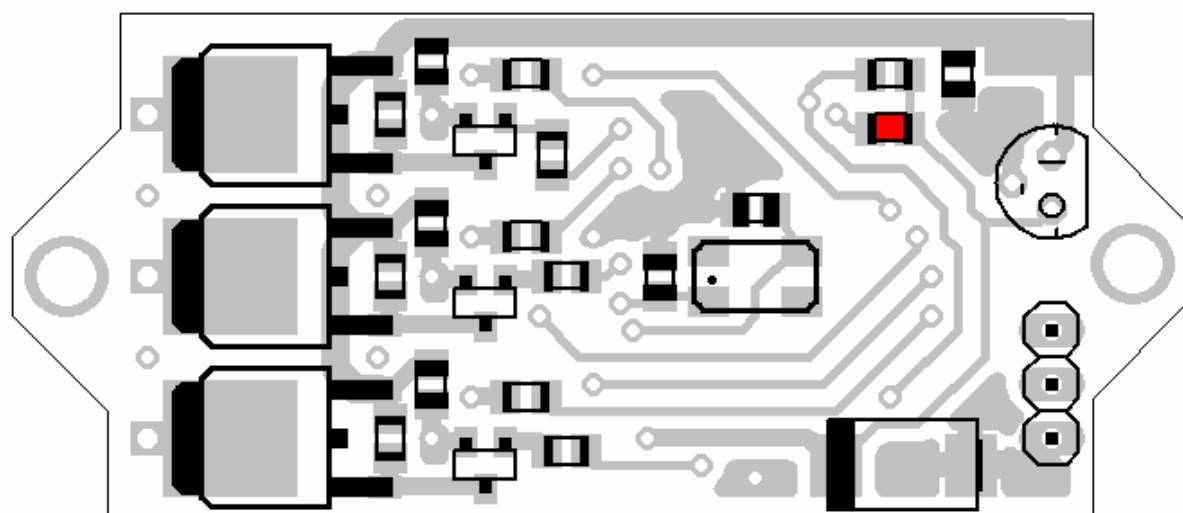
78L05 sowie 100 $\mu$ F 6V



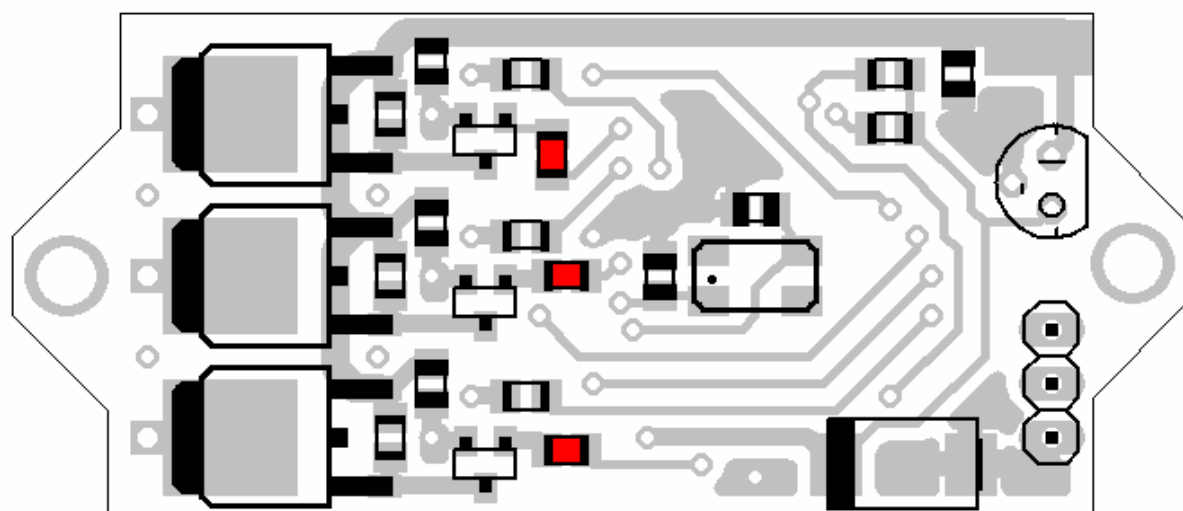
10kOhm



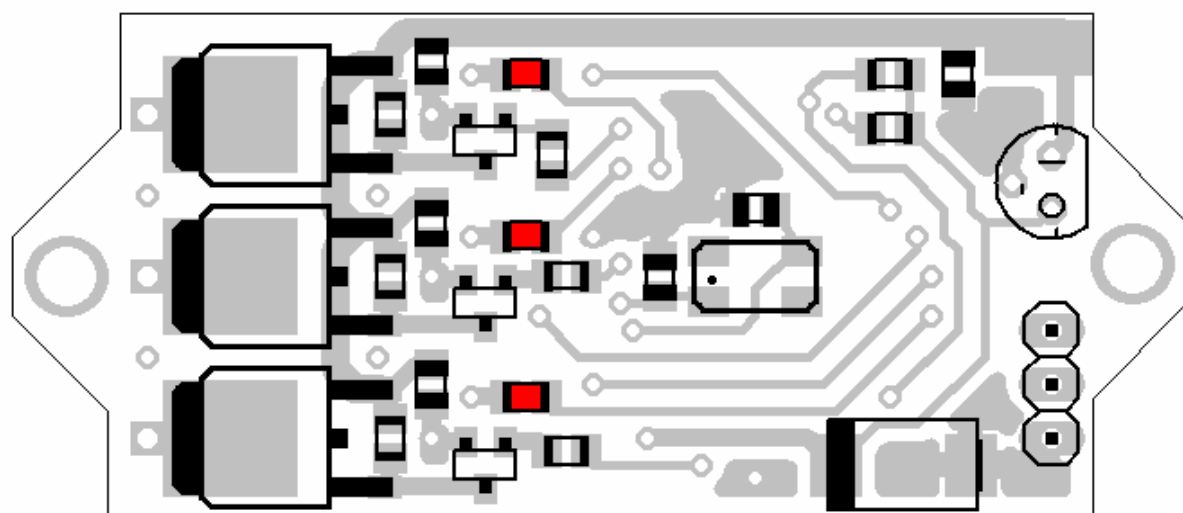
100hm



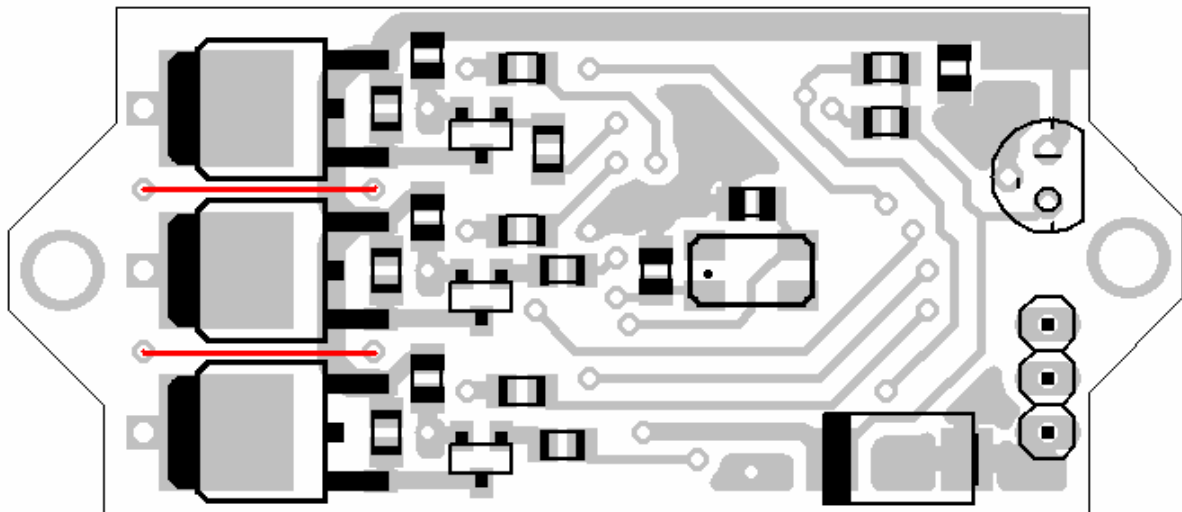
1kOhm



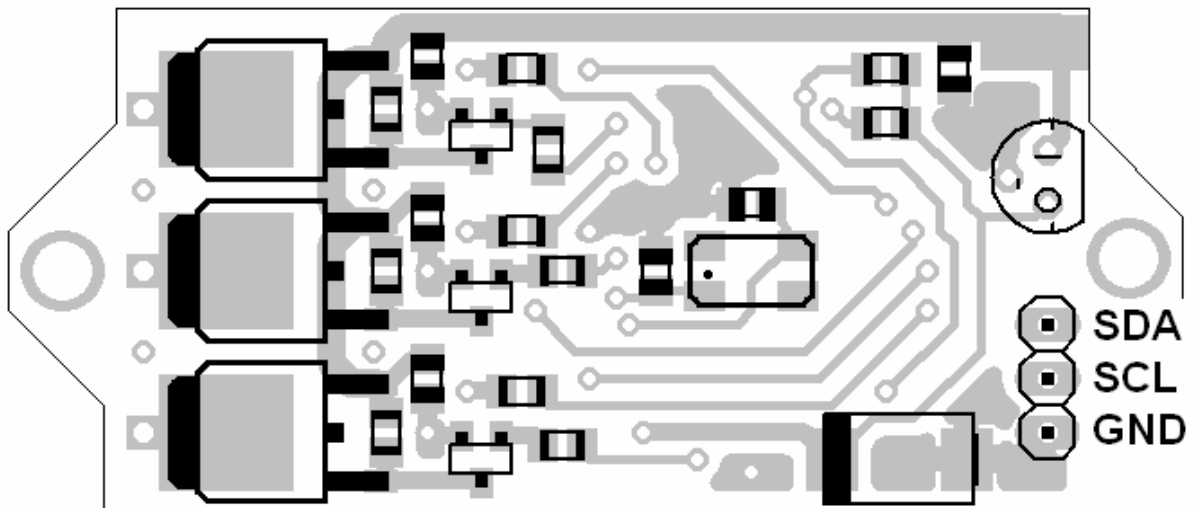
470hm



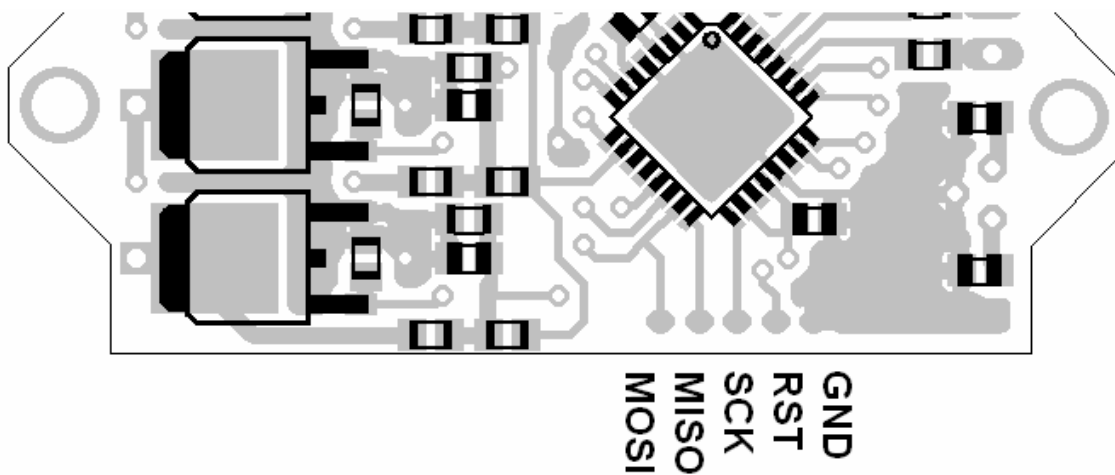
Back EMF Brücken!!



I2C Anschluss



ISP zum programmieren



!Achtung! 220 $\mu$ F 16V Low ESR Kondensator zwischen der Betriebsspannung